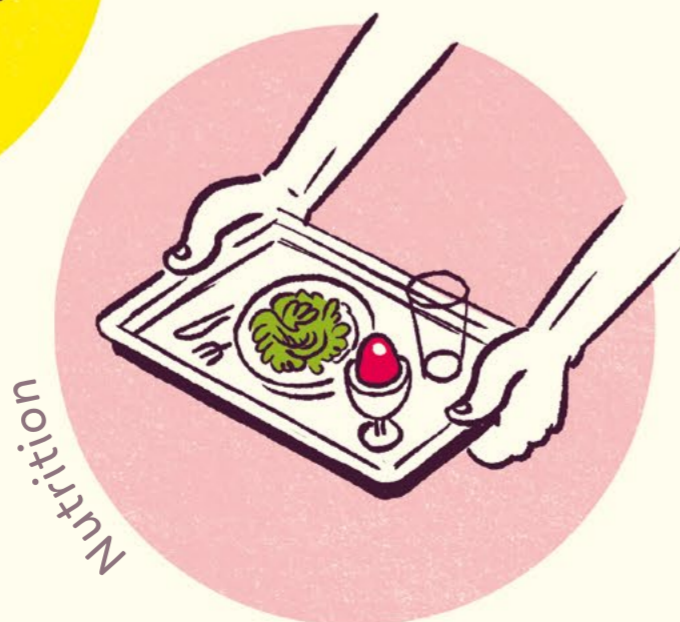
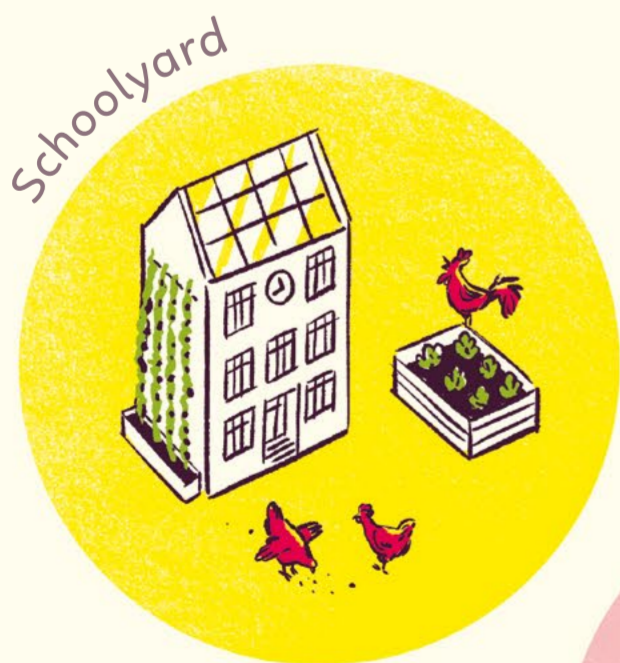
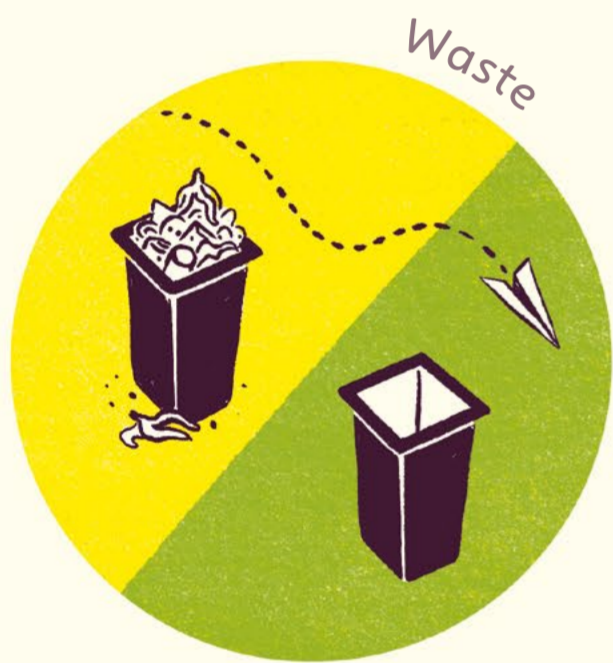
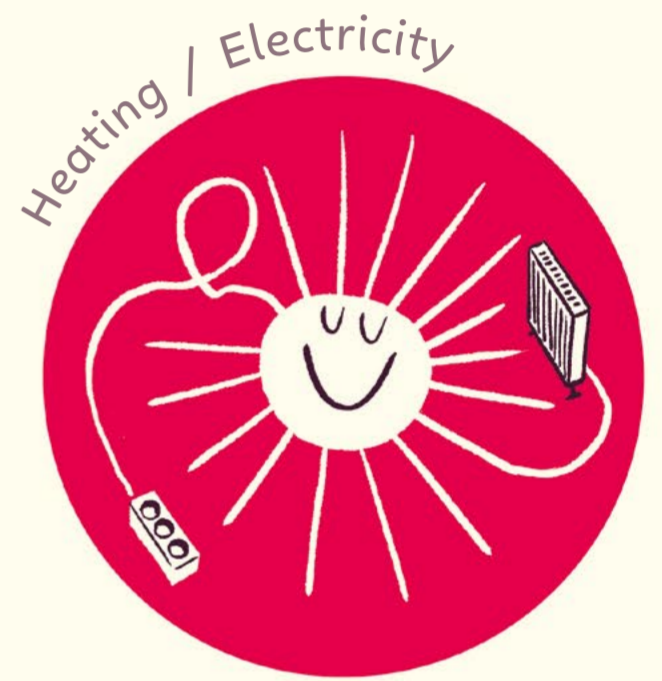


OUR SCHOOL WANTS TO BECOME CLIMATE-NEUTRAL!
HOW DO WE ACHIEVE THIS?

VISIONS AHEAD

together we act



SCHOOLS AS DRIVERS TO CLIMATE NEUTRALITY IN CITIES

VISIONS AHEAD

- TOGETHER WE ACT



ABOUT THE PROJECT

Schools are one of the main sources of greenhouse gas emissions in municipalities. They consume tremendous amounts of resources such as (heating) energy whilst producing great amounts of waste. As they also shape our future generations, they can inspire and teach them how working together is making a difference! This project supports school communities to develop their own vision of a climate-neutral school including concrete measures and their implementation to reduce greenhouse gas emissions. Let us establish change together and become climate-neutral! It is great to give climate neutrality in our municipalities leverage.

Let us establish change together and become climate-neutral! It is great to give climate neutrality in our municipalities leverage.

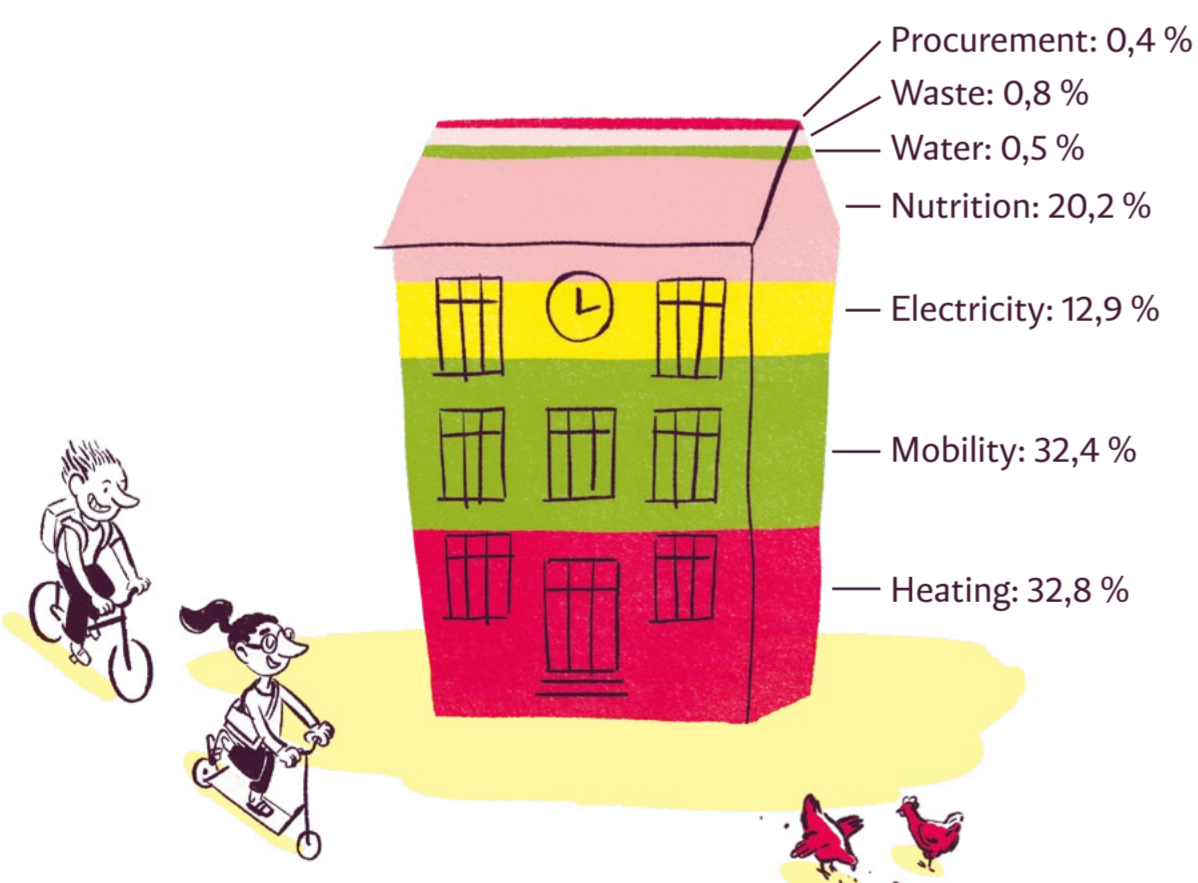
WHY INVOLVING OTHER STAKEHOLDERS?

Enabling a transformation to a climate-neutral school including the sustainable use of resources does not happen isolated behind closed doors. These processes require dialogue and bringing together various perspectives and expertise – YOURS! By involving external stakeholders, the motivated school community gets the support it needs to implement ideas long-term. In this way, public transport, waste

management, district administrations or others can become school allies and develop profound solutions that fit multiple groups of people. Through this holistic approach and cooperation, schools become drivers and role models in reducing greenhouse gas emissions and lead the way towards a climate-neutral city.



DISTRIBUTION OF GREENHOUSE GASES



WHO CAN PARTICIPATE AS A STAKEHOLDER?

- Municipalities, district administrations, municipal politics, facility management, school authorities, regional bodies for education, school boards, regional health authorities, nature conservation authorities, regional environmental bodies, ...
- Service providers and companies that are involved in public transport, waste, energy and water management, in construction and renovation, in the food sector, suppliers of procurement
- Organizations and initiatives that are active in education for sustainable development, e.g. energy, nutrition, mobility, schoolyard greening and also cultural and political education, providers of excursions to nature reserves and national parks, local environmental NGOs, ...
- Local media
- All people potentially interested in the topic of climate neutrality, e.g. also parents, booster clubs ...

WHY TO SUPPORT THIS MISSION?

- You can help to achieve local, national and even European climate goals.
- You can act as a pioneer for future approaches and possible technologies. Thus, become a role model for other companies and municipalities, and achieve an economically attractive position.
- You can show your contribution to the transformation as well as your working reality. Since the transformation towards new clean energies requires a lot of well-trained personnel at all levels and fields, the work in the schools can be used to establish direct contact with the future employees and to convince them to train in your field.
- You can expand your network, drive active change and support and shape the future of your community.

WHAT IS A CLIMATE-NEUTRAL SCHOOL?

Let's define climate neutrality first: Achieving a balance between the greenhouse gases we emit and those that are absorbed from the atmosphere is what we call climate neutrality. In order to accomplish this, we need to take a very close look at our greenhouse gas emissions in various fields of our society, worldwide. The term implicates the need to avoid and reduce greenhouse gas emissions wherever it is possible.

Hence, we aim at avoiding and reducing emissions in the following areas:

- heating energy and electricity
- water consumption and the usage of rainwater
- schoolyard and facade greening
- waste and resource protection
- nutrition and school lunches
- mobility such as the way to school and class trips
- procurement as in paper usage and digitalization

Thus, a climate-neutral school describes a school community that does not emit any harmful greenhouse gases, especially CO₂ into the atmosphere. You might ask yourself, where does it start and where does it end?

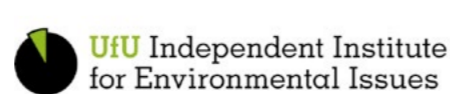
A climate-neutral school also has firmly incorporated education for sustainable development and strategies on how to well communicate climate issues internally and externally in order to enable and consolidate awareness and behavior changes.

The school community consists of many diverse stakeholders such as the teachers and school management, the pupils and their parents, the facility management and of course, you can be part of it too. Since climate neutrality does not stop at the borders of the school grounds, but requires the integration of various fields of actions.

This process starts by analyzing the current greenhouse gas emissions of the school and developing a common vision with precise steps on how to become a climate-neutral school. Accompanied by real actions.

BECOME A PARTNER AND CONTACT US: VISIONS@UFU.DE

Supported by:



on the basis of a decision by the German Bundestag